

# Bobcat of Knoxville – 2012 Rental Rates (10/11)

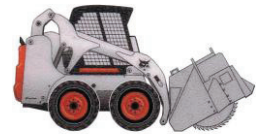
call Paul Blaylock or Keith Layne for monthly specials at (423) 698-4679

TIRE LOADERS	Width	Weight	HP	1/2	Day	Week	4-Week
<a href="#">S70 – w/ purifier</a>	36"	2,708	22.5	\$104	\$139	\$480	\$1350
<a href="#">S100 – w /purifier</a>	50"	4,110	25	\$109	\$145	\$520	\$1400
<a href="#">S130</a>	62"	5,235	46	\$104	\$139	\$499	\$1350
<a href="#">S150</a>	68"	5,935	46	\$108	\$145	\$520	\$1400
<a href="#">S160</a>	68"	6,115	56	\$111	\$149	\$535	\$1450
<a href="#">S175</a>	68"	6,220	46	\$116	\$155	\$555	\$1500
<a href="#">S185</a>	68"	5,808	56	\$120	\$159	\$575	\$1550
<a href="#">S205</a>	68"	6,655	61	\$129	\$169	\$610	\$1650
<a href="#">S220</a>	74"	7,825	75	\$139	\$179	\$650	\$1750
<a href="#">S250 / S630 **</a>	74"	7,723	75	\$149	\$189	\$685	\$1850
<a href="#">S300 / S650 **</a>	74"	8,448	81	\$159	\$199	\$720	\$1950
<a href="#">S330 / S770 **</a>	74"	9,185	85	\$169	\$215	\$760	\$2050
<a href="#">S850 **</a>	79"	10,008	92	\$198	\$265	\$925	\$2645
For Foam Filled Tires			Add...	\$20	\$30	\$105	\$310
**A/C Cab Option			Add...	\$15	\$20	\$100	\$300

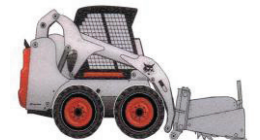


[Training Video](#)

HI- FLO LOADERS	Width	Weight	HP	1/2	Day	Week	4-Week
<a href="#">S250HCab / S630</a>	74"	7,870	75	\$165	\$219	\$750	\$2150
<a href="#">S300HCab / S650</a>	74"	8,140	81	\$172	\$229	\$790	\$2250
<a href="#">S330HCab</a>	74"	9,185	85	\$180	\$239	\$820	\$2350
<a href="#">T300HCab</a>	80"	9,354	81	\$255	\$339	\$1205	\$3350
<a href="#">T320HCab</a>	80"	9,702	92	\$265	\$359	\$1305	\$3590
<a href="#">S330/T300 Forestry Package - (See Video)</a>				\$479	\$639	\$2410	\$6389
Hi Flow Attach: <a href="#">Forestry Mulcher – 48-60"</a>				\$224	\$300	\$1205	\$3039
<a href="#">Planner- 24" (Video)</a>				\$185	\$245	\$925	\$2450
<a href="#">Stump Grinder - 26" head</a>				\$112	\$149	\$520	\$1490
<a href="#">Wheel Saw - 2.5" w -18" d</a>				\$185	\$245	\$925	\$2450

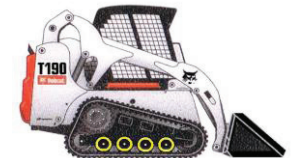


WHEEL SAW



PLANER

TRACK LOADERS	Width	Weight	HP	1/2	Day	Week	4-Week
<a href="#">T110</a>	50"	5,202	41.8	\$149	\$189	\$685	\$1850
<a href="#">T140</a>	56"	6,660	46	\$169	\$215	\$760	\$2050
<a href="#">T180 / T190 **</a>	68"	7,612	61	\$180	\$240	\$870	\$2350
<a href="#">T250 / T630 **</a>	80"	9,347	81	\$215	\$290	\$995	\$2845
<a href="#">T300 / T650 **</a>	80"	9,354	81	\$229	\$305	\$1030	\$2945
<a href="#">T320 / T770 **</a>	80"	9,702	92	\$244	\$325	\$1100	\$3150
<a href="#">T870 **</a>	89"	12,678	99.2	\$275	\$365	\$1275	\$3645
**A/C Cab Option on Above			Add...	\$15	\$20	\$100	\$300



MINI TRACKS	Width	Weight	HP	1/2	Day	Week	4-Week
<a href="#">MT52</a>	36"	2,506	18.8	\$86	\$115	\$405	\$1100
<a href="#">MT55</a>	44"	2,692	23.5	\$94	\$125	\$445	\$1200
MT52 Attachments:				\$59	\$79	\$275	\$785
<a href="#">Auger w/ Bit</a>				\$59	\$69	\$240	\$690
<a href="#">Backhoe M06</a>				\$75	\$99	\$345	\$990
<a href="#">Breaker (HB280) 150 lbs.</a>				\$18	\$25	\$60	\$140
<a href="#">Forks</a>				\$50	\$69	\$210	\$600
<a href="#">Grapple</a>				\$67	\$89	\$315	\$890
<a href="#">Horizontal Bore</a>				\$3	\$5	\$15	\$30
<a href="#">Platform (sulke)</a>				\$40	\$55	\$195	\$555
<a href="#">Scraper-mini</a>				\$50	\$69	\$240	\$690
<a href="#">Soil Conditioner 48"</a>				\$66	\$89	\$276	\$790
<a href="#">Stump Grinder (SG30) - 18" head</a>				\$59	\$79	\$245	\$700
<a href="#">Tiller 38"</a>				\$44	\$59	\$205	\$587
<a href="#">Trencher LT112</a>				\$50	\$69	\$245	\$700
<a href="#">Vibratory Plow</a>							



[Safety Videos](#)

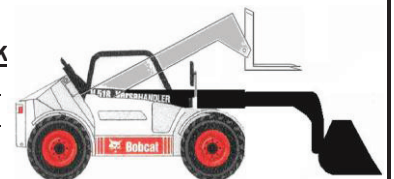


BORING UNIT



TRENCHER

VERSA HANDLER	Width	Weight	HP	1/2	Day	Week	4-Week
<a href="#">V518</a>	78.2"	10,846	100	\$194	\$259	\$845	\$2280
<a href="#">Boom Truss</a>				\$69	\$89	\$330	\$890
<a href="#">Bucket 80" (1 yard)</a>				\$3	\$3	\$9	\$18
<a href="#">Grapple (Industrial)</a>				\$69	\$89	\$330	\$890
<a href="#">Forks (Versa)</a>				\$25	\$45	\$85	\$175



[Training Video](#)

LOADER ATTACHMENTS : <a href="#">(Picture Overview)</a>	1/2	Day	Week	4-Week
<a href="#">Auger (only)</a>	\$59	\$79	\$275	\$785
<a href="#">Auger Bit (only)</a>	\$22	\$30	\$105	\$300
<a href="#">Auger Ext (2' or 4')</a>	\$7	\$9	\$21	\$50
<a href="#">Backhoe 709 <a href="#">(Training Video)</a></a>	\$75	\$99	\$346	\$955
<a href="#">Backhoe 8811</a>	\$79	\$105	\$370	\$1055
<a href="#">Beak (jaw) Grapple</a>	\$60	\$89	\$275	\$785
<a href="#">Boom- Telescopic (16')</a>	\$56	\$75	\$275	\$750
<a href="#">Breaker 350 lbs. <a href="#">(See Video)</a></a>	\$110	\$149	\$489	\$1390
<a href="#">Breaker 500 lbs. <a href="#">(Specs)</a></a>	\$134	\$179	\$575	\$1590
<a href="#">Breaker 750 lbs.</a>	\$169	\$229	\$780	\$2190
<a href="#">Brushcat (bush hog) 60" &amp; 72"</a>	\$139	\$189	\$661	\$1890
<a href="#">Bucket (extra) HD</a>	\$18	\$25	\$75	\$150
<a href="#">Combination (4 in 1) Bucket 74"</a>	\$60	\$79	\$275	\$785
<a href="#">Concrete Bucket 1/2 yrd.</a>	\$48	\$65	\$230	\$650
<a href="#">Dumping Hopper 50 cu ft.</a>	\$50	\$69	\$240	\$690
<a href="#">Foam Filled Tires</a>	\$25	\$30	\$105	\$310
<a href="#">Forks (Pallet)</a>	\$25	\$35	\$75	\$150
<a href="#">Grapple -Industrial 66" or Root Claw</a>	\$66	\$89	\$275	\$785
<a href="#">Grapple -Industrial 74" or Root Claw</a>	\$74	\$99	\$295	\$845
<a href="#">Harley Rake MX6 72" <a href="#">(Soil Conditioner)</a></a>	\$86	\$115	\$405	\$1155
<a href="#">Harley Rake MX7 84"</a>	\$95	\$125	\$445	\$1255
<a href="#">Landplane / Eliminator Rake</a>	\$45	\$60	\$220	\$600
<a href="#">Post Driver 9000</a>	\$125	\$189	\$661	\$1890
<a href="#">Purifier - air</a>	\$15	\$20	\$75	\$200
<a href="#">Roller Vibratory / Tamper</a>	\$110	\$145	\$505	\$1450
<a href="#">Rock hound / 5B Rake 60"</a>	\$85	\$109	\$380	\$1085
<a href="#">Rock hound / 6B Rake 72"</a>	\$92	\$119	\$425	\$1185
<a href="#">Seeder 72"</a>	\$95	\$125	\$440	\$1240
<a href="#">Sweeper w/ Pickup 60"</a>	\$66	\$89	\$295	\$845
<a href="#">Sweeper Angle Broom or 72" w / PU</a>	\$70	\$95	\$315	\$895
<a href="#">Trencher</a>	\$75	\$99	\$355	\$990



AUGER



BACKHOE



BREAKER



BRUSHCAT ROTARY CUTTER

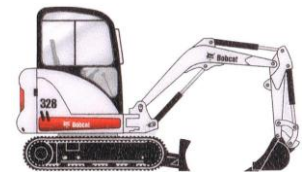


GRAPPLE - INDUSTRIAL



LANDSCAPE RAKE

EXCAVATOR <a href="#">(Video)</a>	Width	Weight	HP	1/2	Day	Week	4-Week
<a href="#">418 / 323</a>	28" / 38.6"	3,526	10 / 13.3	\$134	\$179	\$650	\$1750
<a href="#">325 / 328</a>	55"	6,145	27.7	\$141	\$189	\$685	\$1850
<a href="#">334 / E32 **</a>	59.6"	7,858	33.3	\$161	\$215	\$760	\$2050
<a href="#">335 / E42 **</a>	70.1"	9,170	40	\$199	\$265	\$890	\$2550
<a href="#">341 / E50 **</a>	74.8"	11,660	48	\$221	\$299	\$1009	\$2850
<a href="#">425 Z/T</a>	60.6"	5,849	26.4	\$141	\$189	\$685	\$1850
<a href="#">430 Z/T / E35 **</a>	70" / 69"	8,024	42.8 / 33.3	\$172	\$230	\$835	\$2250
<a href="#">435 Z/T / E45 **</a>	76"	10,555	49	\$214	\$285	\$980	\$2650
<a href="#">E60 M/T</a>	78"	13,556	52.3	\$280	\$375	\$1125	\$3375
<a href="#">E80 M/T</a>	91"	18,689	57	\$375	\$435	\$1552	\$4450



[Training Video](#)

\*\*A/C Cab Option on Above Add... \$15 \$20 \$100 \$300

EXCAVATOR ATTACHMENTS <a href="#">(Excavator- Historical Specs)</a>	1/2	Day	Week	4-Week
<a href="#">Auger w/ Bit</a>	\$72	\$109	\$380	\$1085
<a href="#">Breaker 350 lbs.</a>	\$110	\$149	\$489	\$1390
<a href="#">Breaker 500 lbs.</a>	\$134	\$179	\$575	\$1590
<a href="#">Breaker 750 lbs.</a>	\$169	\$229	\$780	\$2190
<a href="#">Breaker 1000 lbs. <a href="#">(Rammer Specs)</a></a>	\$210	\$289	\$979	\$2650
<a href="#">Thumb-clamp</a>	\$15	\$25	\$85	\$250



AUGER



MISCELLANEOUS ITEMS:	1/2	Day	Week	4-Week
<a href="#">Tractor CT235 (35 HP) Lifts 1500 lbs.</a>	\$139	\$185	\$649	\$1620
<a href="#">Trailer w/ Equip</a>	\$29	\$39	\$129	\$390
<a href="#">Trailer w/o Equip</a>	\$59	\$79	\$276	\$790
<a href="#">Rental Ball</a>	\$4	\$6	\$8	\$10
<a href="#">Rental Light Adaptor</a>	\$2	\$4	\$6	\$7
<a href="#">Rental Grease Gun</a>	\$3	\$5	\$7	\$8
<a href="#">Roller S/F (SD25D) or Smooth Drum (BCA12)</a>	\$149	\$195	\$649	\$1850
<a href="#">Utility Vehicle (2-seat 4-WD) <a href="#">3400 Diesel</a></a>	\$66	\$89	\$315	\$850
<a href="#">Utility Vehicle (4-seat 4-WD) <a href="#">3400XL Gas</a></a>	\$78	\$105	\$368	\$1050



Add 10% Damage Waiver on the above rental rates. [\(See Safety / Training Videos\)](#)